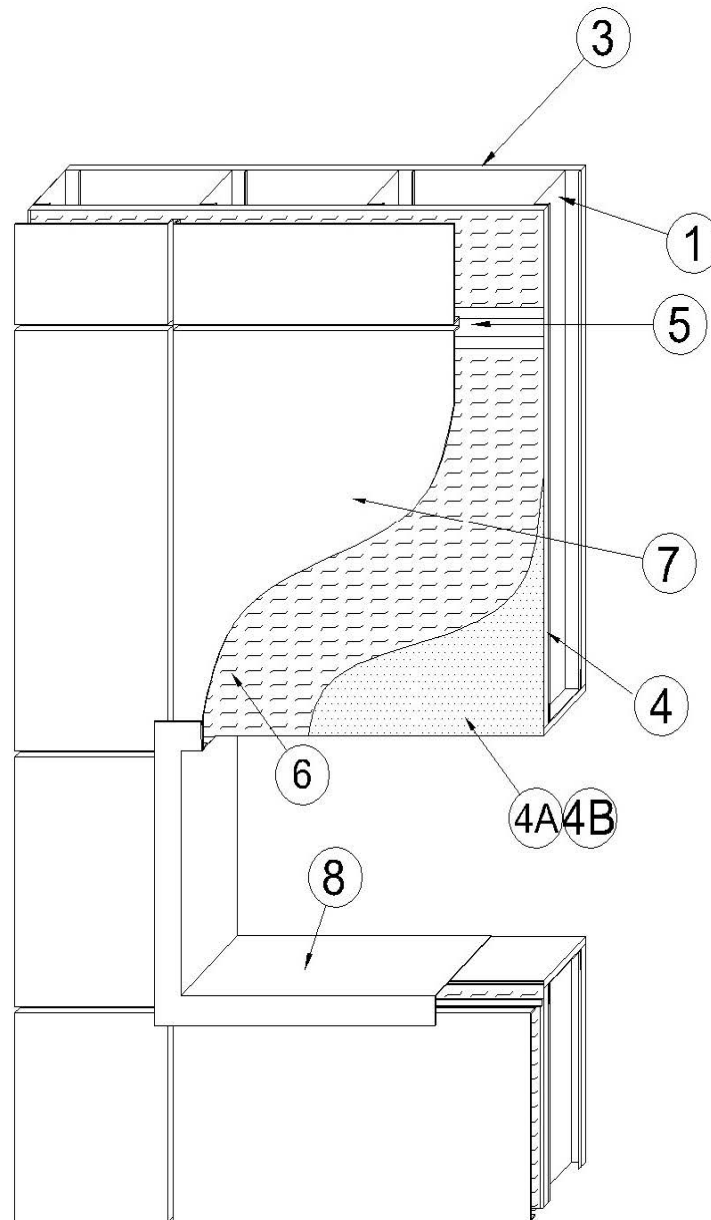


[See General Information for Exterior Wall Systems](#)

## **System No. EWS0060**

May 5, 2023

Exterior Wall System



1. **Steel Studs** — Min 6 in. deep, formed of min 18 ga. galv steel spaced max 24 in. OC secured with #6 by 1/2 in. long, self-drilling screws to 18 ga. top and bottom track. Additional studs were used to completely frame window opening.

1A. **Alternate Base Walls** — (Optional, Not Shown) — Cast concrete walls or concrete masonry units (CMU) concrete walls may be used in lieu of Items 1 through 4. If alternate base wall is used, appropriate fasteners to secured exterior cladding sub-framing (Item 7) to base wall shall be used depending on the base wall material.

2. **Batts and Blankets (BKNV)\* — Mineral Wool or Glass Fiber Stud Cavity Insulation** — (Optional, Not Shown) Mineral wool or glass fiber insulation installed for partial or full stud cavity fill.

**See Batts and Blankets (BKNV) Category for names of Classified Companies.**

3. **Interior Gypsum Board (CKNX)\*** — Min 5/8 in. (16 mm) thick, 4 ft (1.2 m) wide, attached to steel studs with 1-1/4 in. (32 mm) long, Type S-12 #6 steel screws spaced max 8 in. (203 mm) OC. Joints oriented vertically and covered with paper tape and joint compound. Screw heads covered with joint compound.

**See Gypsum Board (CKNX) Category for names of Classified Companies.**

4. **Exterior Gypsum Board (CKNX)\*** — Min 5/8 in. (16 mm) thick, 4 ft (1.2 m) wide, paper faced or glass mat faced, attached to steel studs with 1-1/4 in. (32 mm) long, Type S-12 #6 steel screws spaced max 8 in. (203 mm) OC, paper faced or glass mat faced. Joints oriented vertically or horizontally.

**See Gypsum Board (CKNX) Category for names of Classified Companies.**

4A. **Weather Resistive Barrier (FWFX)\*** — Weather Resistive Barrier Primer - Weather resistive barrier is applied to entire surface of exterior gypsum board sheathing. Weather barrier to be applied to minimum 2 mil thickness by roller or sprayer.

**CARLISLE COATINGS & WATERPROOFING INC** — CCW-702WB

4B. **Exterior Wall System Component – (FWFX)\*** — Self-Adhered barrier applied to completely cover the exterior sheathing gypsum board (Item 3) with min 2 in. (51 mm) vertical or horizontal overlap between layers.

**CARLISLE COATINGS & WATERPROOFING INC** — FIRE RESIST 705FR-A

5. **Mounting System** — The following combination of items shall be installed prior to exterior cladding (Item 7):

5A. **J Girt** — 1 in. (25 mm) deep, 18 ga steel J shaped channel with 3-1/2 in. (89 mm) and 2-1/2 in. (64 mm) legs installed at the top and bottom of the window opening, and top and bottom of wall assembly. Secured to studs through exterior sheathing using the perimeter of the window opening and secured through the exterior sheathing to the steel studs using 1-1/2 in. (38 mm) #14 diameter self-drilling screws at each stud location, max 24 in. (610 mm) on center.

5B. **Z Girt** — 1 in. (25 mm) deep, 18 ga steel Z channel with 1-1/2 in. (38 mm) legs installed horizontally, maximum 24 in. (610 mm) on center. Secured to studs through exterior sheathing using the perimeter of the window opening and secured through the exterior sheathing to the steel studs using 1-1/2 in. (38 mm) #14 diameter self-drilling screws at each stud location, max 24 in. (610 mm) on center.

6. **Mineral Wool (BKNV)\*** — Minimum 4.3 pcf (69 kg/m<sup>3</sup>), 1 in. (25 mm) thick mineral batt insulation friction fit between Z and J Girts. Each panel to be secured with minimum five 12 SWG aluminum insulation pins, 1-1/2 in. (38 mm) screw attached to studs, and secured with No. 26 MSG steel 1 in. (25 mm) round or square clinch shields.

**See Batts and Blankets (BKNV) Category for names of Classified Companies.**

7. **Exterior Cladding (FWFX)\*** — Exterior Cladding (FWFX)\* - Nominal 47-1/2 in. (1206 mm) wide by 1 in. (25 mm) deep, 0.157 in. (4 mm) thick aluminum composite material panel system. Supplied with included aluminum frame extrusions attached to perimeter of all panels for attachment to wall with 1/8 in. button head rivets, 16 inch (406 mm) on center.

Horizontal Joints: 3 in. (76 mm) wide aluminum clips attached to girts channels with 1 in. (25 mm) #14 diameter self-drilling screw. Clips to be max 16 in. (406 mm) on center. Panel extrusions are friction fit into wall clips at bottom and one side, and then remaining clips are installed to hold the panel in place. 0.157 in (4mm) ACM accent strip inserted to cover fasteners and finish joint

Vertical Joints: 3 in. (76 mm) wide aluminum wall extrusion clip fastened with 1-1/4 in. (32 mm) #12 diameter self-drilling screw into hat channels, max 24 in. (610 mm) O.C. 0.081 in. (2mm) thick aluminum continuous aluminum panel extrusion attached to panels with 1/8 in. (4.8 mm) aluminum button head rivet 16 in (406mm) on center. Panel extrusions are friction fit into wall clips. 0.157 in (4mm) ACM accent strip inserted to cover fasteners and finish joint.

**3A COMPOSITES USA INC** — Alucobond® Plus

8. **Exterior Cladding (FWFX)\*** — Metal Flashing — Minimum 0.040 in. (1.0 mm) thick aluminum of equal or greater thickness to cover all inner surfaces of window perimeter.

9. **Mineral Wool – (Not Shown)** – Minimum 4 pcf (64 kg/m<sup>3</sup>), 4 in. (102 mm) thick mineral batt insulation installed within stud cavity at floor line locations. Insulation installed filling full depth of stud cavity for the full depth of the floor line.

**\* Indicates such products shall bear the UL Certification Mark**

Last Updated on 2023-05-05

The appearance of a company's name or product in this database does not in itself assure that products so identified have been manufactured under UL Solutions' Follow - Up Service. Only those products bearing the UL Mark should be considered to be Certified and covered under UL Solutions' Follow - Up Service. Always look for the Mark on the product.

UL Solutions permits the reproduction of the material contained in Product iQ subject to the following conditions: 1. The Guide Information, Assemblies, Constructions, Designs, Systems, and/or Certifications (files) must be presented in their entirety and in a non-misleading manner, without any manipulation of the data (or drawings). 2. The statement "Reprinted from Product iQ with permission from UL Solutions" must appear adjacent to the extracted material. In addition, the reprinted material must include a copyright notice in the following format: "©2023 UL LLC."

Feedback

