

ALUCOBOND

Product Brochure

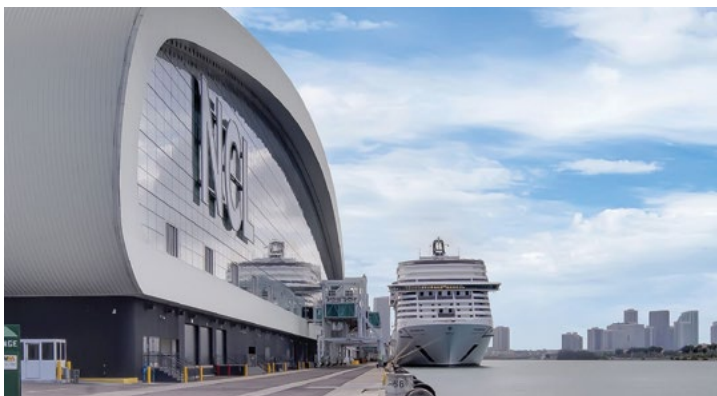


Alief Neighborhood Center
ALUCOBOND PLUS: Custom Northern Pewter Mica,
Custom Ridgedale Silver Mica, Custom Michigan Silverstorm
Architect: EYP Architecture & Engineering
Fabricator: Byrne Metals

Who We Are

The ALUCOBOND® brand has been the pioneer in metal facades with over 50 years of reputable performance in architectural cladding. Sought after for its outstanding product attributes such as flatness, formability, durability, and ease of fabrication, ALUCOBOND products allow architects and fabricators to bring distinctive and exciting visions to life. ALUCOBOND PLUS, with its fire retardant core, has been developed exclusively to allow architects and designers to meet today's fire performance requirements set by the International Building Code (IBC) while using ACM as the material of choice. ALUCOBOND AXCENT provides opportunities to create innovative designs for metal wall cladding, trim, and many other applications.

Made in the USA, ALUCOBOND is manufactured by 3A Composites USA in a range of sizes and trend-forward colors and finishes, both stock and custom. Our array of options lend to creating inspiring architectural concepts



and influential brand assets. Our Brand Identity Program offers dedicated support for stakeholder communications, expertise in color selection, specification support, a trusted fabricator network worldwide, and longevity in product and life cycle.

3A Composites USA is committed to maximizing the life of our products through adherence to ISO standards. In the production of ALUCOBOND PLUS, strenuous efforts have been implemented to reduce energy and water consumption, increase productivity, reduce waste and therefore significantly reducing CO₂ emissions on a continual basis.

Learn how ALUCOBOND has been *giving shape to great ideas* by leading the world in design innovation, and continually adapting to the needs of the growing architectural community.

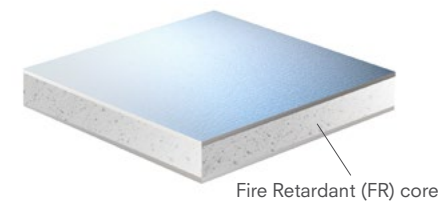
(left top) Creek Lines Sculpture by BRIDGE, San Antonio, TX
(left bottom) Norwegian Cruise Line Terminal B, Miami, FL
(right) The Elm, Bethesda, MD

ALUCOBOND Products



ALUCOBOND® PLUS

ALUCOBOND PLUS 4mm ACM is comprised of two sheets of smooth .020" aluminum thermobonded to a solid, fire retardant core. Developed exclusively to meet fire performance requirements while providing the benefits & versatility of ACM.



Product Properties

Thickness of aluminum skin	0.020" (nominal)
Product thickness	0.157" (4mm nominal)
Weight	1.56 lb/ft ²
Standard panel dimension*	62" x 196"
Maximum width	62"
Maximum length	400"

* Exceptions to standard dimensions include mirror, print, and anodized finishes. Refer to product range table on page 7. Sheets may be fabricated to meet custom panel sizes within maximum width and length above.

ALUCOBOND® AXCENT™

ALUCOBOND AXCENT is a flat aluminum sheet available in three thicknesses: .040", .063", and .080". ALUCOBOND AXCENT .040" sheets offer the perfect complement to ALUCOBOND PLUS for parapet caps, canopies, soffits, and trim. ALUCOBOND AXCENT™ .063" and .080" thick flat aluminum sheets are an excellent noncombustible option for metal wall panels and cladding installed over solid substrates or hat channels. It is also ideal for metal trim, soffits and columns that require larger spans and demand durability. ALUCOBOND AXCENT .063" and .080" materials may be formed utilizing route and return or brake-bend methods for dynamic curves.



Product Properties

	.040"	.063"	.080"
Standard Width*	48.0"	60.0"	60.0"
Standard Length*	120.0"	120.0"	120.0"
Custom Length (minimums apply)	64" - 192"	64" - 192"	64" - 192"
Weight	0.56 lb/ft ²	0.90 lb/ft ²	1.14 lb/ft ²

* width tolerance ± 0.00625"; length tolerance ± 0.125"

ALUCOBOND® EasyFix™

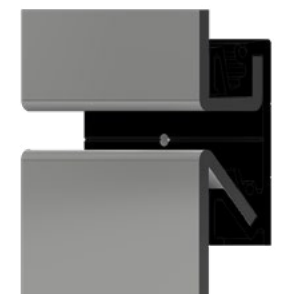
ALUCOBOND EasyFix is a cost-effective installation method for wood-frame construction in multifamily and mixed-use sectors. The simple installation method utilizes an innovative design for attachment of ALUCOBOND PLUS panels. The design provides an aesthetic solution similar to traditional ACM systems.

- ALUCOBOND EasyFix must be used with:
- ALUCOBOND PLUS
 - ALUCOBOND EasyFix: Clips or Rails

Product Properties

System Weight	1.9 lb/ft ²
Max Panel Width Surface*	36"
Maximum sheet width/length	62" / 400"
Clip length	3"
Rail length	12'

* Project specific engineering required for wider panel applications.



Features & Benefits



90 STOCKED ACM COLORS
Complementary flat aluminum sheet colors available.



FLATNESS AND RIGIDITY
Meet design intent without the appearance of oil canning.



LIGHTWEIGHT
Lighter than traditional construction materials, allowing for fast and easy installation.



DURABLE
ALUCOBOND is certified for a service life of 50 years minimum.



FORMABILITY
ALUCOBOND may be cold formed in a pyramid roller or press brake.



EASE OF FABRICATION
Compatible with various fabrication machinery and techniques.



CUSTOM COLOR EXPERTISE
We will match hand samples, Pantone®, RAL, NCS or other paint code reference in desired gloss levels and textures.



PERFORATION CAPABILITIES
Solid, mica and metallic finishes may be perforated in geometric, slotted or customized patterns.



CONTRIBUTES LEED POINTS
ALUCOBOND PLUS and AXCENT contribute toward LEED credit for recycled content.



ZERO VOC'S EMITTED IN USE
Zero VOC's are emitted from installed ALUCOBOND PLUS and ALUCOBOND AXCENT panels. Additionally, panels are coil-coated in a factory that captures & destroys 99% of VOC's.



EPD MEETS ISO STANDARDS
ALUCOBOND has an industry Environmental Product Declaration (EPD) in accordance with International ISO Standards, certifying a service life of 50 years.



100% RECYCLABLE
ALUCOBOND PLUS and ALUCOBOND AXCENT are 100% recyclable materials, meaning the core material and the aluminum skins can be returned to the material cycle and reused in new products.

Colors & Finishes

ALUCOBOND®
GIVING SHAPE TO GREAT IDEAS

ALUCOBOND is stocked in 90 trend-forward colors & finishes, availability varies by product type. **Scan or click the QR code to explore the colors in each Collection.**

The Classic Collection



Color plays an integral role in the architectural environment; the timeless palette in our Classic Collection reflects your passion for what's possible. From classic neutrals to biophilic hues, this line offers a wide range of options to help you *give shape to great ideas*.

The Natural Collection



Biophilic design conceptualizes space in a way that acknowledges the human need to connect with nature. The finishes in the Natural Collection amplify the organic beauty and character of different elements & materials found in the world around us.

The Spectra Collection

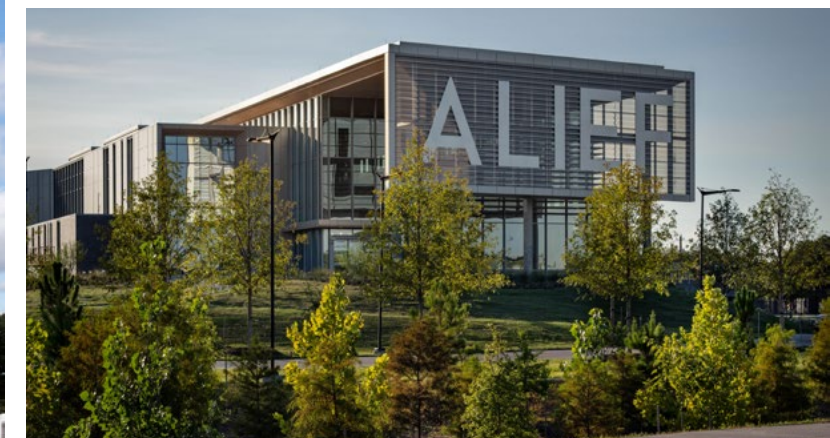
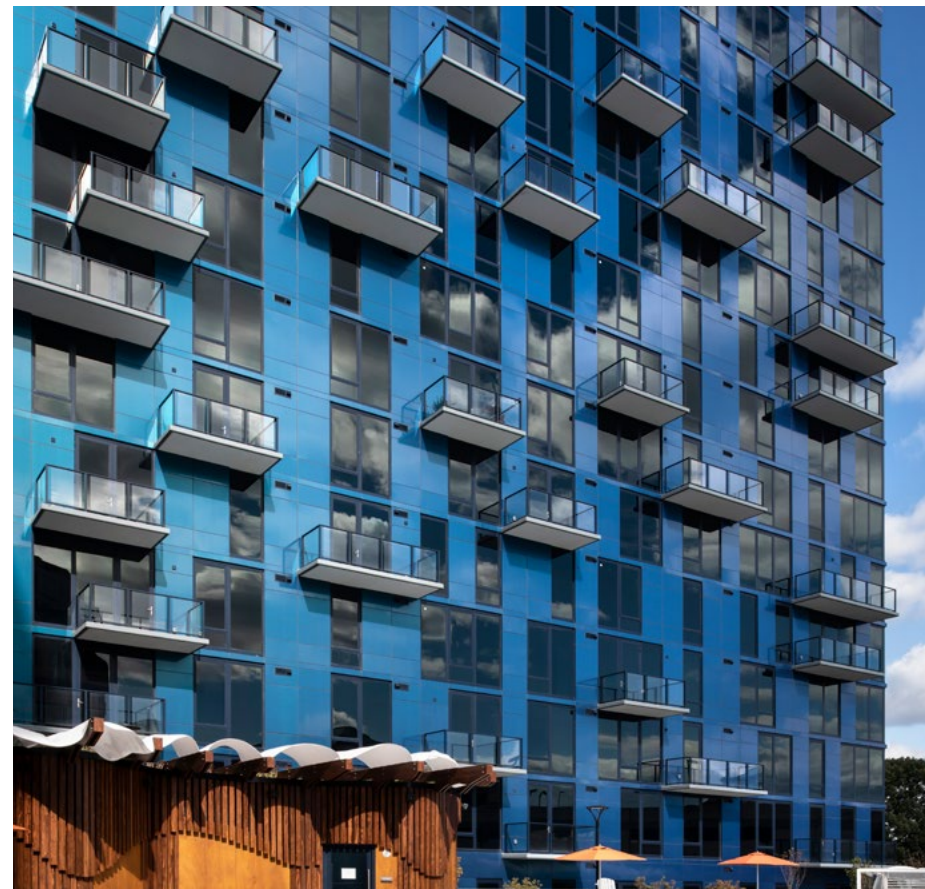


To add a dynamic element of fascination and movement to any architectural facade, these transitional finishes celebrate the natural color shifts that occur in the world around us – from raw natural elements to the glowing luster and sheen found in modern alloys and luxury finishes.

The Anodized Collection



In addition to the strength and high-quality appearance that come standard with our collections, this line uses the anodizing process to enhance the intrinsic clarity and beauty of aluminum while creating a harder, smoother, more durable surface.



Alief Neighborhood Center (bottom right)
Margaritaville, Jacksonville Beach, FL © Attic Fire Photography (top right)
Exo Apartments, Reston, VA © Mark Kempf (left)

Standard Product Range

ALUCOBOND PLUS					
Thickness	4mm				
Width	40"	49.2"	50"	60"	62"
Length	196"	146"	196"	198"	196"
Solids	○		○		●
Micas / Metallics	○		○		●
Color-Changing	○		○		●
Textured	○		○		●
Reflect Mirror		●			
Anodized				●	
Brushed			○		●
Prints			●		

● Stocked ○ On Request

ALUCOBOND AXCENT			
Thickness	.040"	.063"	.080"
Sheet Size	48" x 120"	60" x 120"	60" x 120"
Solids	●	●	●
Micas / Metallics	●	●	●
Color-Changing	●	●	●
Textured	●	●	●
Reflect Mirror	NA	NA	NA
Anodized	NA	NA	NA
Brushed	NA	NA	NA
Prints	NA	NA	NA

● Stock or Made to Order (MTO)
Please reference the ALUCOBOND Color Library to learn more about Stock and MTO availability.



Paint Finishes

ALUCOBOND finishes are coated in accordance with AAMA standards which represent the highest performance standards for exterior finishes in the industry. All finishes are backed with a best-in-class warranty covering full replacement or repair costs.

PVDF (Polyvinylidene Fluoride) finishes can be produced in either a 2-coat (primer + color coat) or 3-coat (primer + color coat + top coat). Known for its durability and strong performance characteristics PVDF is used to develop a high-quality solid, mica or metallic finish.

PVDF/FEVE finish consists of 2 coats of PVDF & a clear coat of FEVE. On our Spectra finishes, the FEVE coat provides a higher gloss level & depending on the viewing angle, different wave-lengths of light are reflected, resulting in an ever-changing color gradient with iridescent highlights.

SMP (Silicone Modified Polyester) Paint systems are a blend of polyester & silicon intermediates. SMP coatings deliver an excellent balance of exterior gloss, and color retention with resistance to stains, chalking, ultraviolet radiation, weather and humidity.

FEVE (Fluoropolymer Based) A transparent top coat is applied to the coil, protecting the surface from the elements & preserves the aesthetic of the bare finish. Various tints can be applied to broaden the color palette & add to the aesthetics of a project.

For warranty information please [contact](#) your local ALUCOBOND Sales Manager.



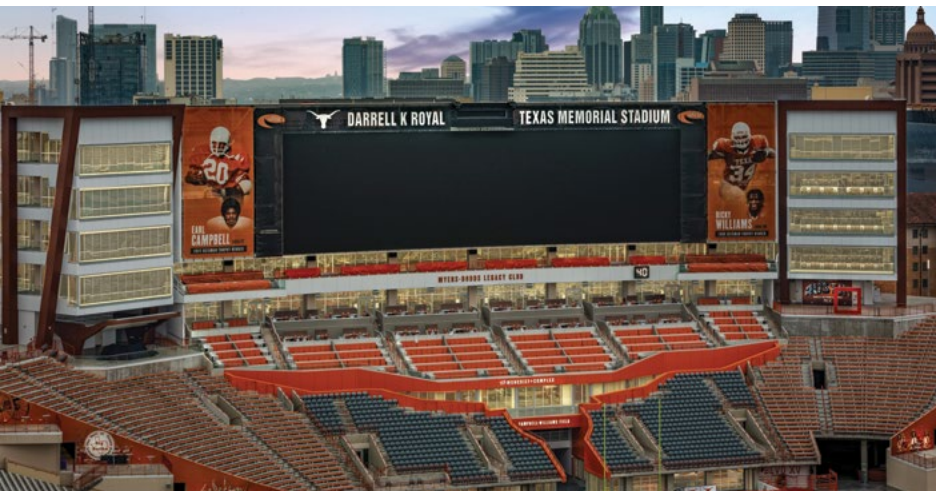
ALUCOBOND
GIVING SHAPE TO GREAT IDEAS
The Stack in Deep Ellum, Dallas, TX

Applications

Exterior Wall Cladding | Materials: ACM, .063", .080"

- ALUCOBOND's flatness, rigidity, lightweight and formability support a plethora of design intents
- Our versatility of stocking colors & finishes gives designers the freedom to mix finishes without sacrificing budget
- ALUCOBOND can withstand weather conditions while maintaining its aesthetic long-term

The University of Texas (UT) Darrell K Royal-Texas Memorial Stadium (below)
 Founder Plaza (right) Courtesy of Ace Glass Construction Corp./Ace Glass Manufacturing Corp.

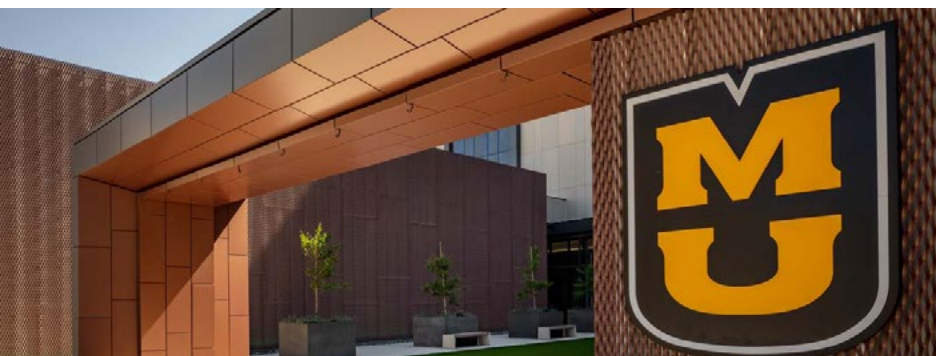


Quick Glance
 Application headings identify appropriate material selections.
 ACM - ALUCOBOND PLUS
 .040", .063", .080" - ALUCOBOND AXCENT



Soffit & Canopy | Materials: ACM, .040", .063", .080"

- The flatness, lightweight and rigidity of ALUCOBOND PLUS panels make it a great option for soffit and canopy applications
- ALUCOBOND AXCENT can be roll formed or pressed to add strength and create interlocking joints
- ALUCOBOND PLUS and ALUCOBOND AXCENT can also be easily ventilated to increase airflow, easily cut for lighting or signage elements, and can be curved along rounded faces
- ALUCOBOND AXCENT is available in a wide range of colors complementary to PLUS



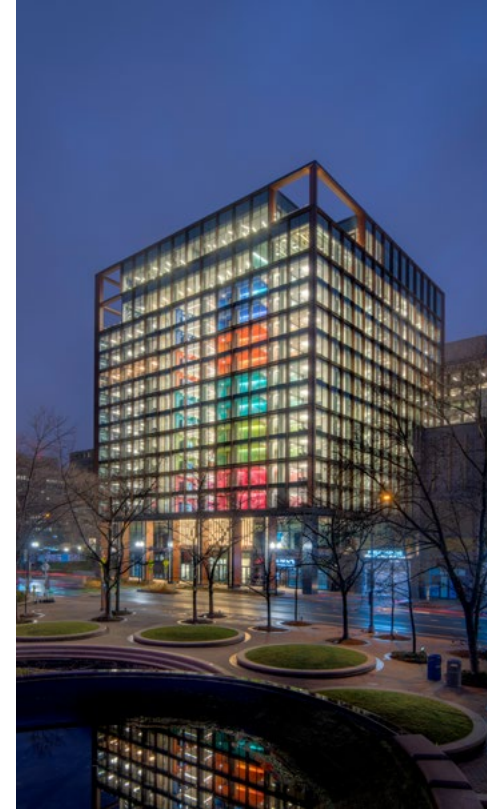
University of Missouri

Ceilings | Materials: ACM, .040", .063", .080"

- Class A fire rating makes ALUCOBOND PLUS appropriate for interior and exterior uses
- Custom designs can allow for back panel illumination and creative ceiling concepts
- Color-shifting finishes from the Spectra Collection are popular for dynamic ceiling applications



University of Texas



Curtainwall and Sun Shades | Materials: ACM, .063", .080"

With a Class A Fire Rating, ALUCOBOND PLUS fire-retardant (FR) ACM panels are ideal for curtainwall applications and offer a variety of benefits:

- Panels are available with one side or both sides finished
- Fins can be custom designed to complement the exterior cladding and reduce solar gain
- Provides continual color flow from curtainwall to vertical ALUCOBOND panels
- Replaces glass to enhance the design aesthetic and reduce project costs
- Used in curtainwall systems that utilize structural silicone, structural tapes or pressure plate
- May be used in spandrel applications to create a unique facade

(left) Confidential Commercial Building in Crystal City, VA, © Sam Kittner

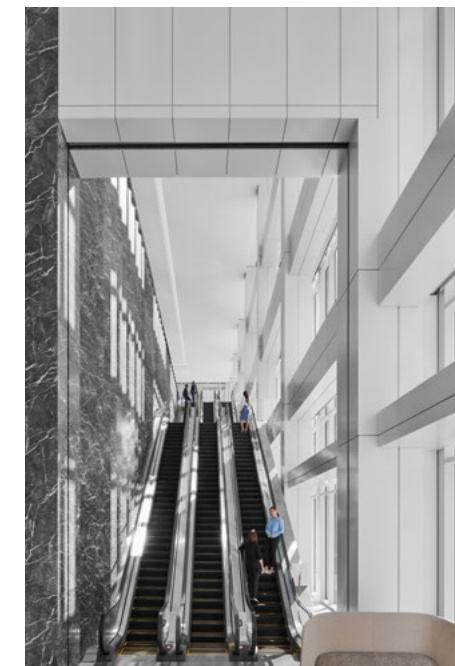
ALUCOBOND® EasyFix System for Exteriors & Interiors | Materials: ACM

- Cost-effective installation method for commercial wood-frame construction in multifamily and mixed-use projects
- Utilizing an innovative design for the attachment of ALUCOBOND PLUS panels, ALUCOBOND EasyFix offers simplicity and efficiency in meeting tight construction schedules
- Trend-forward color options along with customizable panel layouts, reveal options, and widths allow for freedom in design
- The design provides an aesthetic solution similar to traditional ACM systems, combining 2 types of folds
- ALUCOBOND EasyFix is quickly fabricated off-site by a trained and Licensed Fabricator.
- Ships flat to the job site for easy handling. Installation is made simple with a variety of fastening options.

Interiors | Materials: ACM, .040", .063", .080"

- Seamless transition from exterior facade to interior design
- Dynamic color palette of 89 stock colors & finishes
- Ability to create unique customizable shapes
- Biophilic hues effortlessly complement surroundings
- Large flat panels inspire clean design
- Custom color capabilities
- Create striking modern designs
- May be used for wall cladding, feature wall, beam wrap, baffles, stairway, architectural ceiling, column cover, entry way, mechanical covering, and more

Houston Center - Lobby Renovation (center) @ Peter Molick
 Arkansas Children's Hospital Pine Bluff Clinic © Tim Hursley



Applications

Quick Glance
Application headings identify appropriate material selections.
ACM - ALUCOBOND PLUS
.040", .063", .080" - ALUCOBOND AXCENT

Flashing / Parapet Cap

Materials: .040", .063", .080"

- ALUCOBOND AXCENT is easily formed in a variety of machines to create the perfect cap
- ALUCOBOND AXCENT is available in a wide range of colors complementary to ALUCOBOND PLUS

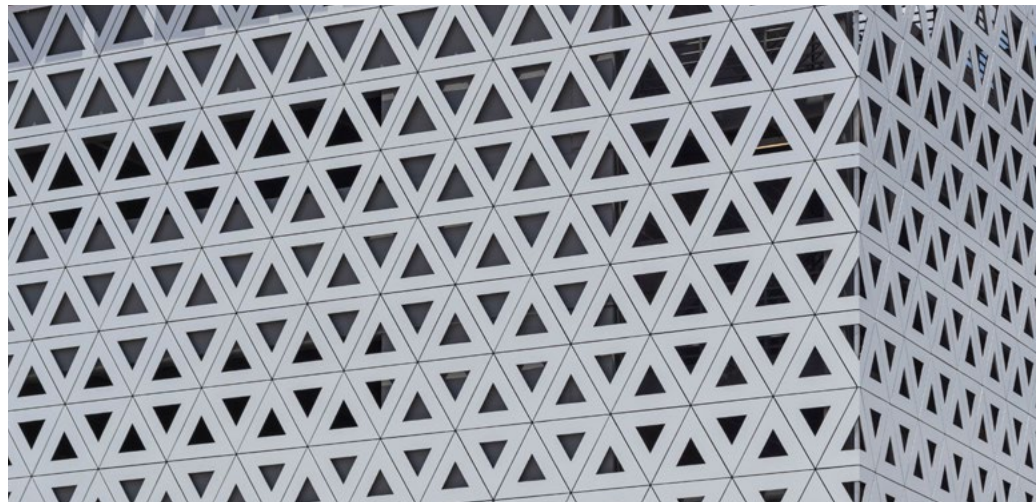


MDL Flats, D.C. (right)

Perforation

Materials: ACM, .040", .063", .080"

- ALUCOBOND PLUS can be used to transform the exterior facade with perforated designs allowing for more light and creative intent
- Custom perforation designs enables new aesthetic possibilities
- Both faces of the panel can be finished with long lasting exterior coatings



Gilman Honda, Dallas, TX (right)



Column Covers | **Materials:** ACM, .063", .080"

- ALUCOBOND PLUS and ALUCOBOND AXCENT can be easily formed via route and return, rolling, and brake-bends, making for an ideal column cover
- Tight radii can be achieved and weather tightness can be maintained with sealed joints

SHI International Garza Office Building, courtesy of White Construction Company (left)
Hyatt Place National Harbor, D.C. (right)

Testing & Certifications



ALUCOBOND® PLUS

N. AMERICAN BUILDING CODE ACCEPTANCE

- IBC
- Miami-Dade County, Florida
- National Building Code of Canada
- State of Florida
- City of Los Angeles, California

SUSTAINABILITY DESIGN

- LEED 3
- LEED v4.0 and 4.1
 - LCA Industry Standard
 - EPD Industry Standard

ACCEPTED EVALUATION REPORTS

- ICC-ES: 1185
- Florida Product Approval: FL29842
- Miami Dade County NOA: 15-0923.03
- Los Angeles Research Report: 24868
- Underwriters Laboratory: 19980

WALL ASSEMBLY FIRE TESTING

- CAN / ULC S134*
- NFPA 285*

*Results are based upon tests made with ALUCOBOND PLUS panels in specific wall assemblies. For more information about assemblies that have been tested, please contact technical support: Thomas.Rogers@3acomposites.com

Type I-V Attachment Systems

Exterior Systems

Wet Seal Systems

The Rout and Return Wet System uses a primary silicone sealant for air and water barrier, along with a simple clip design. These systems are economical, and are recommended for use on sloping walls.

DBVR Systems

The drain-back ventilated rainscreen system using ACM protects the wall of the building from high and rapid temperature changes. The system is designed to block nearly all moisture, however, when water does enter the cavity it will drain through the designed weep holes or will dry naturally via the airflow of the cavity.

PER Systems

The pressure equalized rainscreen system creates pressure equilibrium between the cavity and the outside wind force. This prevents any capillary movement of water into the cavity. This design requires the air and vapor barrier to absorb the windload.

Interior Systems

Face Fastened

A Face Fastened system eliminates the need for routing panels, and can provide a clean aesthetic when using fasteners that are painted to match ALUCOBOND panels.

Edge Capture

Edge Capture systems allow for the least amount of preparation of the ALUCOBOND panels, and can be a great option for feature walls or decoration.

Tape

Taped systems have long been used in both the exterior and interior markets. Tape systems involve shop application of hanging extrusions which are then hung onto pre-placed clips or rails. Manufacturers such as 3M and Tesa, have numerous products that have been successfully used in hanging ACM all over the world.

ALUCOBOND EasyFix (Exteriors & Interiors)

ALUCOBOND EasyFix is a cost-effective installation method for wood-frame construction in multifamily and mixed-use sectors. Utilizing an innovative design for the attachment of ALUCOBOND PLUS panels, ALUCOBOND EasyFix offers simplicity and efficiency in meeting tight construction schedules. The design provides an aesthetic solution similar to traditional ACM systems, combining 2 types of folds - 135° and 90°. Using the available attachment system, panels insert into short clips or a continuous rail. Ideal for exterior or interior cladding.

3A Composites USA's integrated management system provides us with an important framework for implementing sustainability initiatives in our business operations. The main constituents of our integrated management system are the areas of safety, health, environment, energy and quality.

“Significant efforts to reduce energy and water consumption, increase productivity, cut down waste and therefore significantly reduce CO₂ emissions are made on a continuous basis.”

Energy Reduction

Efficient handling of energy sources can have a major impact on reducing CO₂, a key consideration at 3A Composites USA. This is why we have set up an energy management system in accordance with ISO 14001, with the goal of improving efficiency and reducing waste.

Life Cycle

The high durability of ALUCOBOND has proven to last the test of time. With a verified service life expectancy of 50 years ALUCOBOND removes the high waste associated with replacement of materials. A plethora of applications allow architects to offer new and innovative designs while meeting the standards of sustainable planning.

Recycling

ALUCOBOND can be easily and homogeneously dismantled and returned to the reusable material cycle. ALUCOBOND PLUS and ALUCOBOND AXCENT are 100 % recyclable, i.e. the core materials and aluminum skins are returned to the material cycle and used to produce new material. It is the high material value of aluminum which provides the most important recycling impetus for the economy. Aluminum is recyclable to an unlimited extent without losing its characteristics.

VOC and SVOC Emissions

ALUCOBOND PLUS and ALUCOBOND AXCENT panels are coil-coated in a factory that captures and destroys volatile organic compounds (VOC's). This process is accomplished using a regenerative thermal oxidizer in our facility's paint line. By removing VOC's in the factory, there is no need for field coating and accompanying VOC's.

LEED Certification

Since LEED's introduction in 1998 it has become the most recognizable green building program in the world. LEED focuses on constructing buildings that have minimal impact on the environment during construction, occupation and reclamation, and recognizes that utilizing recycled materials is an important part of minimizing environmental impact.

The recycled aluminum content of ALUCOBOND PLUS and available EPD can provide contribution toward earning LEED points. This recognition is the driving force for using ALUCOBOND PLUS material.



Contact

800.626.3365
info.usa@3acomposites.com

3A Composites USA Headquarters
721 Jetton Street, Suite 325
Davidson, NC 28036

3A Composites USA Manufacturing Facility
208 West 5th Street
Benton, KY 42025

