






ALUCOBOND® FaceFastened

Product Data Sheet

Overview:

ALUCOBOND® FaceFastened is a simple, but high-performance architectural cladding system that combines a sleek, modern aesthetic with superior durability and ease of installation. Designed for use in a wide range of applications, this simple screwed ACM system utilizes **ALUCOBOND FaceFastened Attachment Rails** and **ALUCOBOND FaceFastened Attachment Screws** to create a flush-mounted appearance that is both visually striking and highly functional. Whether you're looking to create a dramatic, eye-catching façade or simply seeking a reliable, cost-effective cladding solution, ALUCOBOND FaceFastened is the perfect choice.

ALUCOBOND® FaceFastened Components		
ALUCOBOND FaceFastened Joint-Rail	ALUCOBOND FaceFastened End-Rail	ALUCOBOND FaceFastened Attachment Screw
		
SKU # _____	SKU # _____	SKU # _____

Component Specs:

Component	Material	Color/Finish	Width	Length	Weight
ALUCOBOND PLUS Panel	4mm Aluminum Composite Panel	91 Standard Finishes or Custom	Customized Widths Between 6" - 62"	Customized Lengths Between 7' - 16'	1.56 lb/ft2
ALUCOBOND FaceFastened Joint-Rail	Extruded Aluminum	Black	4.25"	8'	0.502 lbs/ft
ALUCOBOND FaceFastened Rail (Start/End/Mid)	Extruded Aluminum	Black	3.19"	8'	0.409 lbs/ft
ALUCOBOND FaceFastened Attachment Screw	304 Stainless	10 Standard Colors or Custom Color to Design	0.472" (head width)	0.825"	1.5 lbs. per 250ct.

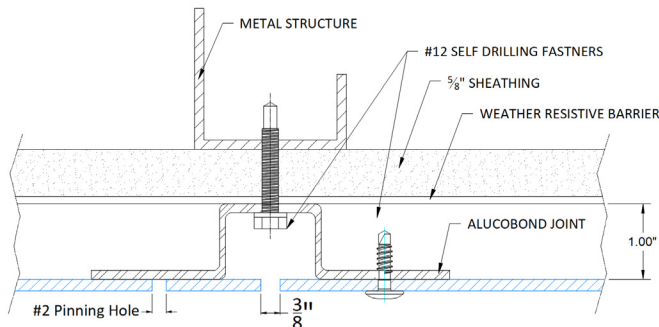
Fastening Requirements:

ALUCOBOND FaceFastened system has carefully engineered screw spacing, designed to meet and exceed the standards set by ASTM E330. Screw spacing document can be found [here](#). For comprehensive technical documentation and further details, please contact your Local Sales Manager.

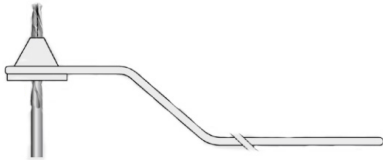
Expansion Holes

Thermal expansion should always be considered in designs using ALUCOBOND PLUS material. ALUCOBOND PLUS material has been tested and has a Rate of Expansion of 1/8" movement in an 8 foot panel with a 100°F temperature change. Expansion holes should be pre-drilled using a P drill bit (0.323"). The pinning hole should be pre-drilled with a #2 (0.221") drill bit in the bottom left corner of each panel.

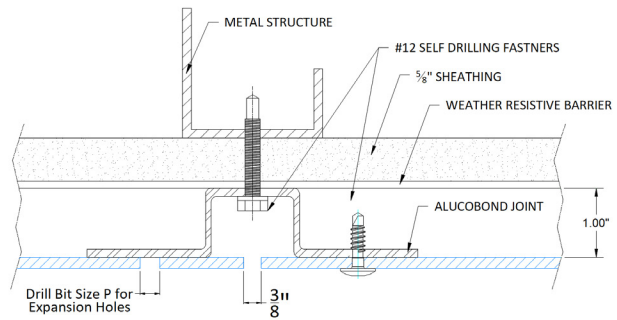
Pinning Hole



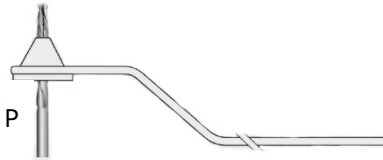
Drilling Jig
#2



Expansion Hole



Drilling Jig P



Storage and Handling

ALUCOBOND PLUS material should always be stored in a cool dry area where temperatures are relatively stable. Excessive temperature fluctuations may cause condensation to form on the stored sheets, possibly resulting in permanent surface damage, especially on anodized material. Do not allow moisture to reach stored material. If crates of ALUCOBOND PLUS material are shipped horizontally, the installer should provide adequate support to prevent sagging. Long-term storage with the panels sagging could create a permanent bow in the material. However, small quantities of material may be stored on edge if adequately supported with an "A" frame rack. The "A" frame must have a solid base and back rest.