

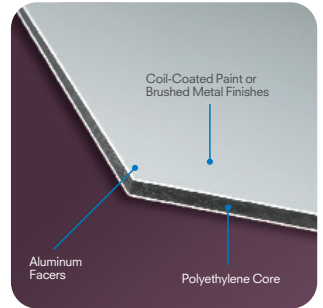
The ultimate Aluminum Composite Material (ACM) for the display & signage markets

THE ALUMINUM COMPOSITE MATERIAL (ACM) COLLECTION

- **DIBOND®** has been the display industry's leading ACM for more than 15 years. It is comprised of two pre-painted sheets of .012" aluminum with a solid polyethylene core.
- **E-PANEL™** is comprised of two pre-painted sheets of .008" aluminum with a solid polyethylene core; manufactured in China.
- **EPL-5™** is comprised of two pre-painted sheets of .005" aluminum with a solid polyethylene core; manufactured in China.

WHY CHOOSE DIBOND?

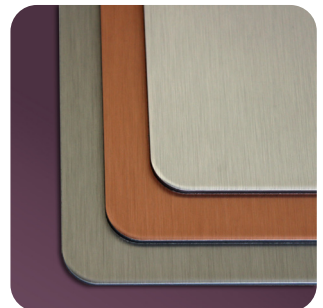
- Premium, smooth surface is ideal for digital & screen printing
- Can be digitally printed on both sides
- Provides excellent durability in outdoor applications
- Superior surface protects expensive digital and screen-printed graphics
- Can be routed and returned to add dimension, or roll-formed to create dramatic curves
- Brushed metal finishes provide a high quality appearance for interior design applications
- High gloss & matte color options
- Flattest panel on the market - won't bow or oil can
- Approximately 1/2 the weight of a solid aluminum sheet
- Self extinguishing; UL 94V-0 and Class A fire rating (ASTM E-84)



DIBOND



DIBOND COLORS



BUTLERFINISH® Brushed Metals

WHY CHOOSE E-PANEL?

- Recommended for flat panel applications
- Suitable to mount graphics
- Suitable for digital & screen printing
- Digitally printable on both sides
- Can be saw cut, routed or punched
- Class A fire rating (ASTM E-84)

WHY CHOOSE EPL-5?

- Recommended for flat panel applications
- Suitable to mount graphics
- Suitable for printing
- Digitally printable on both side
- Can be saw cut, routed or punched

PRODUCT AVAILABILITY

	Gauges	Colors	Sizes
DIBOND	2mm, 3mm, 4mm	White Matte Jet Black Matte Ultramarine Blue* British Green* Red* Yellow* *Colors available in a high gloss or matte finish	Dark Bronze Aluminum Metallic BUTLERFINISH BUTLERFINISH Copper BUTLERFINISH Steel 49.2" x 98.4" 49.2" x 120.1" 59.1" x 120.1"
E-PANEL	2mm, 3mm, 4mm, 6mm	White, Brushed Silver, Mill Finish (aluminum)	48" x 96", 60" x 120"
EPL-5	3mm	White	48" x 96"

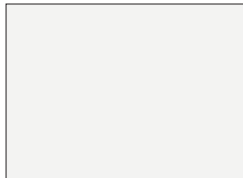
Due to the various facer and foam combinations, please refer to the website for product availability in the desired thickness and size.

The ultimate Aluminum Composite Material (ACM) for the display & signage markets

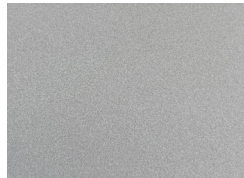
DIBOND PRODUCT SPECIFICATIONS

	4.1' X 8.2' (49.2"x98.4")	4.1' x 10.0' (49.2"x120.1")	4.9' X 10.0' (59.1"x120.1")
White Matte / White Matte	2mm, 3mm, 4mm		3mm
White Matte / Jet Black Matte		3mm	
Jet Black Matte / Jet Black Matte	3mm		
Red High Gloss / Red Matte	3mm		
Yellow High Gloss / Yellow Matte	3mm		
Ultramarine Blue High Gloss / Ultramarine Blue Matte	3mm		
British Green High Gloss / British Green Matte	3mm		
Dark Bronze / Aluminum Metallic (replaced Dark Bronze / Fine Silver)	3mm		
BUTLERFINISH / Aluminum Metallic (replaced Brushed Silver / Fine Silver)	3mm		
BUTLERFINISH Copper / White Matte (replaced Brushed Copper / White)	3mm		
BUTLERFINISH Steel / White Matte (replaced Brushed Stainless / White)	3mm		

DIBOND COLORS AND FINISHES



White Matte



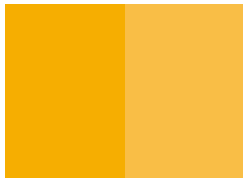
Aluminum Metallic
(replaced Fine Silver)



BUTLERFINISH
(replaced Brushed Silver)



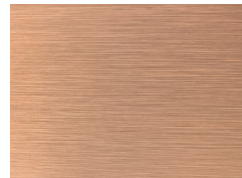
BUTLERFINISH Steel
(replaced Brushed Stainless)



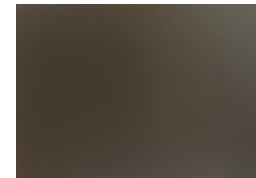
Yellow High Gloss / Yellow Matte
(replaced Caution Yellow)



Red High Gloss / Red Matte
(replaced Hunter Red)



BUTLERFINISH Copper
(replaced Brushed Copper)



Dark Bronze



British Green High Gloss / British Green Matte
(replaced Dark Green)



Ultramarine Blue High Gloss / Ultramarine Blue Matte



Jet Black Matte