



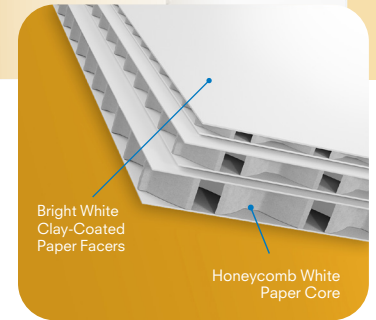
# POLAR™

Print **O**ptimized **L**ight **A**nd **R**ecyclable paperboard designed for sustainable printing campaigns



## Impressive Printability, 100% Recyclability

Introducing the new, all-paper display board, specially manufactured with a honeycomb core structure for a very rigid, flat board and high-quality, clay-coated paper facers that allow for excellent direct print results. The specialty facers provide a smooth, bright white surface that prevent any read-through lines found in competitive corrugated products. Available in 3 different thicknesses and 2 core colors, POLAR is ideal for a wide variety of medium term display applications.



### PRODUCT BENEFITS

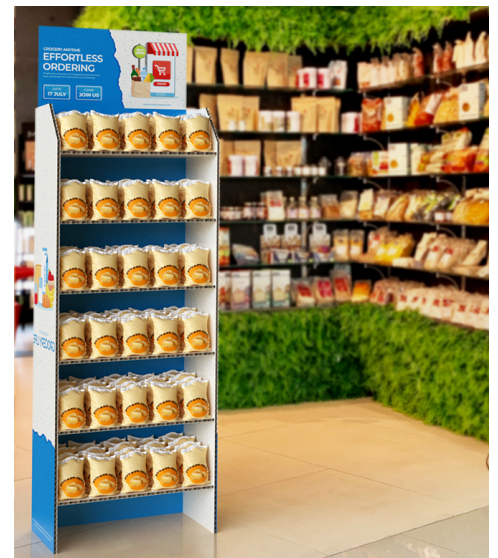
- Optimized for direct digital printing - coated papers provide high quality print performance
- Specialty paper prevents “read-through” from the core
- Same printing specifications used as FOME-COR®
- Can be direct printed - 2-sided
- Light weight, rigid & dimensionally stable
- Flexible facers allow for V-routing and bending for 3D displays
- Easy to cut with manual or CNC cutters
- Available with a white or natural paper core

### APPLICATIONS

- Short to Medium Term Displays
- High Impact Graphics
- POP/POS Displays
- Interior Signage
- Free-standing Displays
- Hanging Signage
- Promotional Campaigns
- Tradeshow & Exhibits
- Dimensional Displays

### FABRICATIONS

- Digital Printing
- Screen Printing
- Mounting
- CNC Cutting
- Knife Cutting
- V-cutting to Fold
- Painting



### PRODUCT AVAILABILITY



Gauges	Facers	Core	Sheet Sizes	Packaging
1/4", 1/2", 3/4"	Bright White Clay-Coated Paper Facers	White Natural	48" x 96" 60" x 96" 60" x 120"	Carton Bulk

